

Definitive Technology Redefines the Future!



Four Exciting New Products Launch Definitive into 2007

- New Mythos® ST SuperTower® with built-in SuperCube-powered subwoofer
- New UIW RCS II Reference Home Theater In-Ceiling Speaker
- New UIW RSS II Reference In-Wall/In-Ceiling Speaker
- New ProCinema 600 System

Definitive Technology®
The Leader in High-Performance Loudspeakers®

Definitive Redefines Mythos

Definitive's CES 2007 new product introduction is one of the most important in our history. With a landmark new addition to our Mythos line as well as a new entry-level system which redefines incredible sound and affordable price, Definitive is poised for another exciting year.

State-of-the-Art Performance for Your Lifestyle

New Mythos® ST SuperTower® with Built-in Powered SuperCube Subwoofer

The Mythos ST SuperTower, which has already been awarded the coveted *2007 CES Innovations Award* for Design and Engineering Excellence, begins with a sleek and sexy polished black or silver aluminum monocoque cabinet mounted on a beautiful polished granite base. It contains extremely advanced Definitive components and technologies that have been engineered to deliver sonic performance truly in a class by itself. The Mythos' trend setting concept of form and function has dramatically evolved and goes considerably further in the ST through the incorporation of high power built-in SuperCube subwoofers right into the sleek aluminum cabinets.



Each Mythos ST contains a D'Appolito array consisting of two high-definition Definitive Balanced Dual Surround System (BDSS) 5 1/4" drivers (patent pending) surrounding a new generation Definitive pure aluminum dome tweeter, which incorporates a new voice coil, new dome, new surround and new special acoustically contoured faceplate.

The subwoofer is built around a newly designed Definitive racetrack-shaped carbon fiber coned driver, which has a Finite Element Magnetic Analysis optimized magnet structure. This long-excursion, very fast active driver is pressure-coupled to two racetrack-shaped planar mediate infrasonic radiators. This amazing subwoofer driver array is powered by a built-in 300-watt digital amplifier. Low frequency performance is exceptional and is basically similar to Definitive's award-winning SuperCube I.

Overall sonic performance is in a class by itself especially when taking into account the svelte profile and remarkably affordable price. Imaging and depth retrieval is simply stunning. The STs, whether used in stereo or as part of a multi-channel music or home theater system, are capable of recreating a three dimensional soundstage which is breathtaking in terms of its ability to make musicians and action come alive in the listening room. The resolution of the D'Appolito arrays with their newly designed drivers combines ultimate clarity with a natural silky smoothness. And the soul-stirring bass, which is produced by the dual subwoofers, is capable of earthshaking dynamics as well as the most subtle and detailed musical nuances.

The Mythos STs can be combined with their matching center channel speaker (Mythos Eight) and surrounds (Mythos Gem XLs) for an exceptional surround system that, although not inexpensive, offers unmatched value.



The Mythos ST comes with a gorgeous polished granite base.

SPECIFICATIONS:

Mythos ST: Dimensions: 51 1/2" H x 9 1/2" D x 6 3/4" W. Frequency Response: 14 Hz – 30 kHz. Efficiency: 93 dB. Nominal Impedance: 4 – 8 ohms. Driver Complement: Two 5 1/4" high-definition cast-magnesium basket polymer upper midrange drivers. One 1" pure aluminum dome tweeter. One 6" x 10" long-throw racetrack subwoofer coupled to two 6" x 10" long-throw racetrack radiators. Rec. Assoc. Ampl.: 20 – 350 watts/channel. Built-In Subwoofer Power Amplifier: 300-watt digitally-coupled Class D amplifier.

Mythos ST SuperTowers are available in both polished silver and gloss black finishes.



Mythos ST SuperTower's Advanced Driver Technology

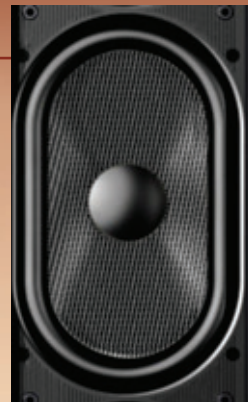


New high-definition drivers incorporate our Balanced Double Surround System (BDSS) technology (patent pending).

Mythos ST's new generation tweeter incorporates a new voice coil, a new annealed dome, a new surround and a special acoustically contoured faceplate.



The ST's built-in subwoofer incorporates Definitive's new racetrack-shaped carbon fiber coned driver coupled to two planar medite infrasonic radiators.



New ProCinema System is an Affordable Miracle!

New ProCinema 600 Sub/Sat System

Definitive's new ProCinema 600 System is our new entry-level 6-piece home theater system. Its surprisingly affordable price belies its remarkable sophistication. The ProCinema 600 System incorporates the same new technologies and advancements, including BDSS drivers, pure aluminum dome tweeters, planar medite passive radiators and a 250-watt SuperCube technology powered subwoofer, which have made the new ProCinema 800 and 1000 systems instant mega hits.

The satellites and center channel are available in high-gloss hand-rubbed piano gloss black (with matching black subwoofer) or gloss white. The satellites can be shelf-mounted with their unique tri-lobed base, wall-mounted using the built-in keyhole mount or optional pivot mount or stand-mounted with their optional floor stands. The center channels have an adjustable foot for shelf-mounting or can be wall-mounted using their built-in threaded inserts.

Sonically, the new ProCinema 600 System is a revelation in terms of achieving incredible sound at an affordable price. Their imaging is absolutely boxless, spacious and three-dimensional while delivering pinpoint specificity and localization when called for. They are velvety smooth with a you-are-there presence which is unique at any price and unheard of in this price range. The 600 system is dynamic but capable of great subtlety so it excels equally with music or movies.

SPECIFICATIONS:

ProMonitor 600: Dimensions: 7" H x 4¹/₄" D x 4" W. Frequency Response: 65 Hz – 30 kHz. Driver Complement: One 3¹/₄" bass/midrange driver coupled to one 3¹/₄" pressure-driven planar low-frequency radiator. One 1" pure aluminum dome tweeter. Rec. Assoc. Ampl.: 10 – 150 watts/channel. Frequency Response: 65 Hz – 30 kHz.

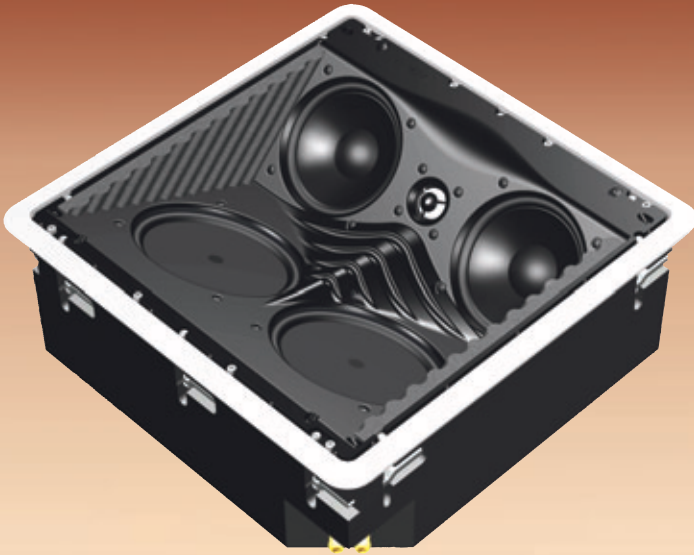
ProCenter 600: Dimensions: 4" H x 4¹/₄" D x 10¹/₂" W. Frequency Response: 55 Hz – 30 kHz. Driver Complement: Two 3¹/₄" bass/midrange drivers coupled to two 3¹/₄" pressure-driven planar low-frequency radiator. One 1" pure aluminum dome tweeter.

ProSub 600: Dimensions: 13" H x 13" D x 10³/₈" W. Frequency Response: 22 Hz – 150 Hz. Driver Complement: One 8" woofer with polymer cone, one 8" infrasonic radiator. Amplifier: 250 watts RMS. Speaker Level High-Pass Filter: 6 dB/octave (100 Hz). High-Level Low-Pass Filter: 24 dB/octave continuously variable (40 Hz – 150 Hz).



ProCinema 600

Definitive Redefines Architectural Sonic Perfection!



New UIW Reference In-Ceiling Speaker (UIW RCS II)

The new UIW RCS II is a significant addition to Definitive's Reference Architectural Series of loudspeakers designed to bring the performance of the finest free-standing speakers into custom flush-mount in-wall and in-ceiling installations. The Reference Ceiling Speaker (RCS II) is intended for use as an in-ceiling front main left, center or right channel speaker, as well as a rear or side surround speaker in custom installed home theater systems of the highest quality. In addition, it can be used as a superb left or right speaker in a high quality stereo music system.

"sounded great ... I was tremendously impressed"

— Fred Manteghian, *Ultimate AV*

Like our other Reference Architectural Series speakers (IWSUB 10/10, IWSUB Reference, RLS II, RLS III and RSS II), the RCS II is a totally non-resonant sealed mediate enclosure, which in this case easily and attractively installs flush into the ceiling in either new or existing construction. It features a D'Appolito driver array angled down and aimed at the listening area (two 5.25" cast-basket bass/midrange drivers and a 1" pure aluminum tweeter) as well as two 6.5" pressure-coupled planar low bass radiators. The precisely configured dual angled baffles incorporate a uniquely effective acoustic treatment which combines a computer-optimized ribbed surface with special dampening panels in order to achieve a linear uncolored sound combined with boxless three-dimensional imaging in which acoustic events seem to effortlessly float in space. In fact, the overall sonic performance of the RCS II is truly remarkable, combining breathtaking dynamics, engrossing musical subtlety and amazingly spacious imaging that totally belies its in-ceiling configuration.

"Sound so solid and clean you'll think it's coming from a higher power"

— Peter Pachal, *Sound & Vision*

In addition, the RCS II with its active driver/bass radiator combination achieves an extended low-frequency response, which is deep and dynamic with a smooth and controlled roll-off that allows it to seamlessly blend with a subwoofer with a quality that has never been previously achieved in an in-ceiling system. Of course, our in-wall UIW Sub 10/10 or UIW Sub Reference are a perfect complement to the RCS II for unmatched performance in a stealth home theater.

New UIW Reference Surround Speaker (UIW RSS II)

The UIW RSS II is another important new addition to Definitive's Reference Architectural Series. The RSS II is intended for rear or side surround use in 5, 6, 7, 8, 9 or more channel custom-install systems of the highest quality. Like the other Reference Architectural Series speakers, the RSS II is a totally non-resonant sealed mediate enclosure, which easily installs flush into walls or ceilings in either new or existing construction. It features a curved angle bipolar array, which is perfect for movie and music surround use because it provides an ideal combination of direct sound for specificity and localization and ambient sound for enhanced spaciousness.

The RSS II delivers uniquely enveloping surround performance totally immersing the listeners in a complete 360-degree soundstage. Walls seem to disappear and the listening room will be almost magically transformed into the location of the original sonic event. The curved aspect of the bipolar array further improves dispersion into the room. When installed in the ceiling, the direction in which the driver arrays face can be rotated 90 degrees in order to optimize the performance depending on the specific location of the speakers in relation to the seating area.

Each RSS II bipolar surround speaker contains two complete 3-way full-range systems for a total of 6 driver/radiators in each speaker. The RSS II's dynamic, spacious and uncolored sonic signature has been specifically engineered to blend perfectly with any of Definitive's loudspeakers whether freestanding, in-wall or in-ceiling for an amazing lifelike sonic experience.

RCS II Specifications: Cutout Size: 14³/₈" x 14³/₈". Outer Dimensions: 15¹/₂" x 15¹/₂". Depth: 5⁷/₈". Driver Complement: Two high-definition cast-basket 5¹/₄" bass/midrange drivers, two 6¹/₂" pressure-coupled low bass radiators, one 1" pure aluminum dome tweeter. Rec. Assoc. Amplification: 10 – 250 watts. Frequency Response: 22 Hz – 30 kHz.

RSS II Specifications: Cutout Size: 11⁵/₈" H x 9⁷/₈" W. Outer Dimensions: 12³/₄" H x 11" W. Depth: 3⁷/₈". Driver Complement: Two high-definition cast-basket 4¹/₂" bass/midrange drivers, two 4¹/₂" planar pressure-coupled low bass radiators, two 1" pure aluminum dome tweeters. Rec. Assoc. Amplification: 10 – 200 watts. Frequency Response: 26 Hz – 30 kHz.